

BOULEVARD PLANTER WITH GREENSCREEN TRELLIS

Assembly Instructions



This instruction is a guide to installing the Greenscreen trellis onto a Boulevard planter.

PARTS *Included*

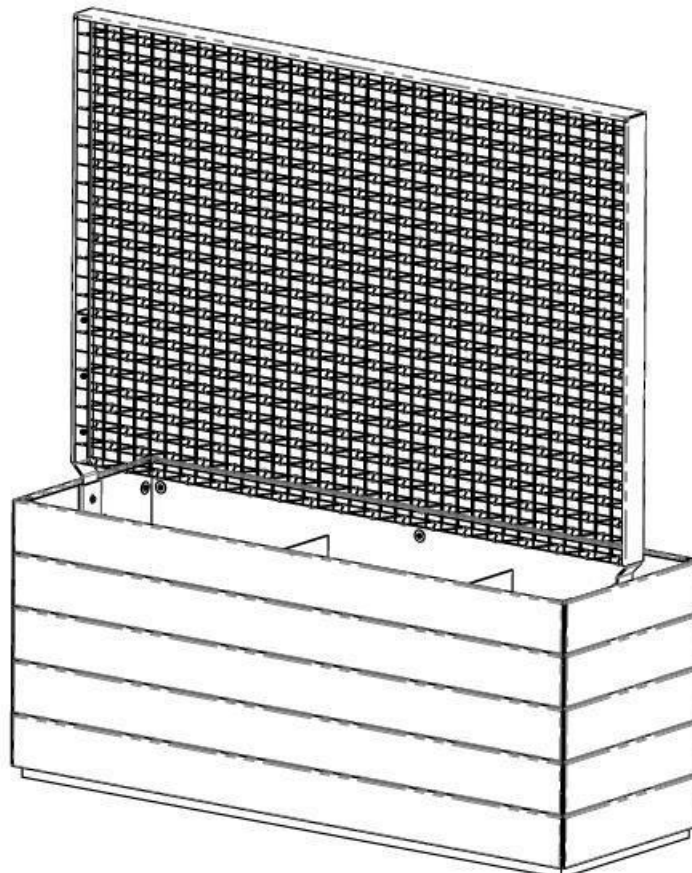
Greenscreen Trellis Panel	Qty. 1
Boulevard Planter (48", 72", or 96")	Qty. 1
1/4"-20 SST Hex Screw	Qty. 4
1/4" SST Flat Washer	Qty. 4
3/8"-16 SST Hex Nut	Qty. 6
3/8" SST Lock Washer	Qty. 6
3/8" SST Flat Washer	Qty. 6

NEEDED FOR ASSEMBLY

Not Included

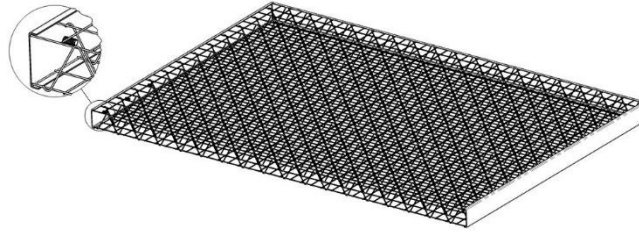
7/16" Wrench
9/16" Wrench
Pocket Level or Measuring Tape
Silicone Sealant

Fully read instructions before starting assembly. You can find information about caring for Tournesol products and materials by visiting: <https://tournesol.com/care> where you can download Care & Maintenance documents.



Centered Trellis Shown
(offset optional, same assembly procedure)

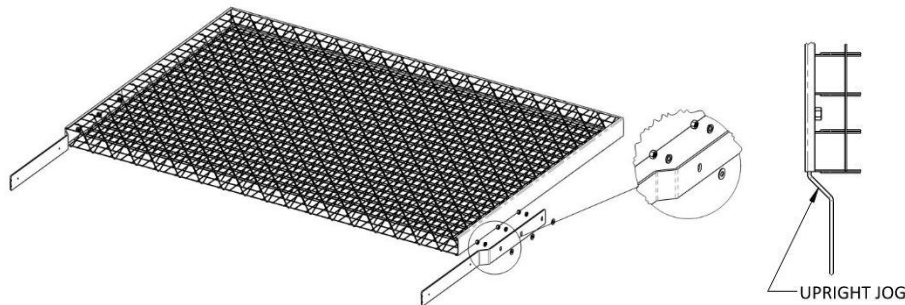
BOULEVARD PLANTER WITH GREENSCREEN TRELLIS Assembly Instructions



Greenscreen trellis panel as shipped shown above.

STEP 1

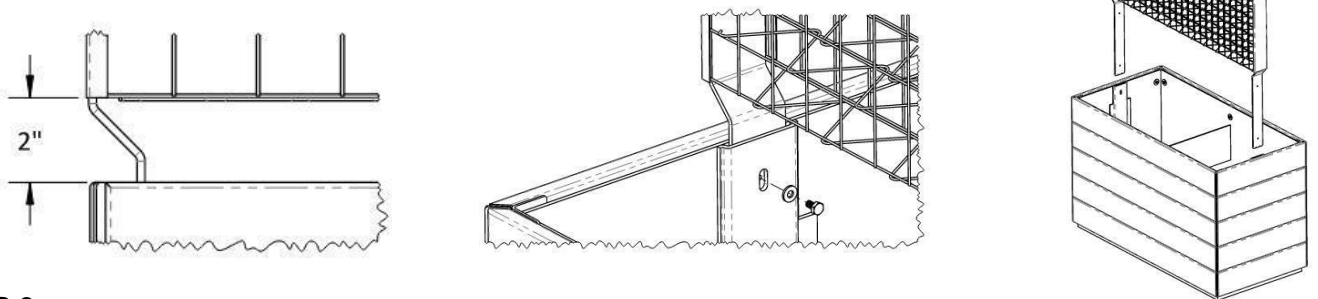
Attach upright brackets to trellis panel with 3/8" hardware. Place a flat washer over each stud located on the inside of panel. Insert upright bracket into trellis and engage with studs with jog of bracket to the inside (see below). Place a lock washer over each stud and then secure with hex nut (do not over-tighten). Do this for each side of the panel.



STEP 2

Place the trellis panel legs into the pockets on the top interior edge of the planter. Allow a 2" gap between the top edge (wood) of the planter and the bottom edge of the panel.

Note: This may require two people to complete easily. Slightly rock the panel back-and-forth or to-and-fro to allow the legs to slide to the bottom of the pocket.



STEP 3

With the panel legs inserted into the planter pockets, align the pocket hole (planter interior) with the holes on the legs. Insert a 1/4" hex bolt and washer into each opening in planter pocket to secure. Hand-tighten. Level the panel relative to the planter with the 2" gap. Fully tighten bolts. Apply silicone sealant over the hardware and fill any openings around them.

Note: A level could be placed on top of the panel and small adjustments can be made while final tightening of the hex screws is completed. Once secured and as added protection from the elements, a silicone sealant should be applied to the flat washer and hex bolt prior to placing any soil in the planter.